

Information Service Representative (ISR) vs Group Representative (GR) What is the difference?

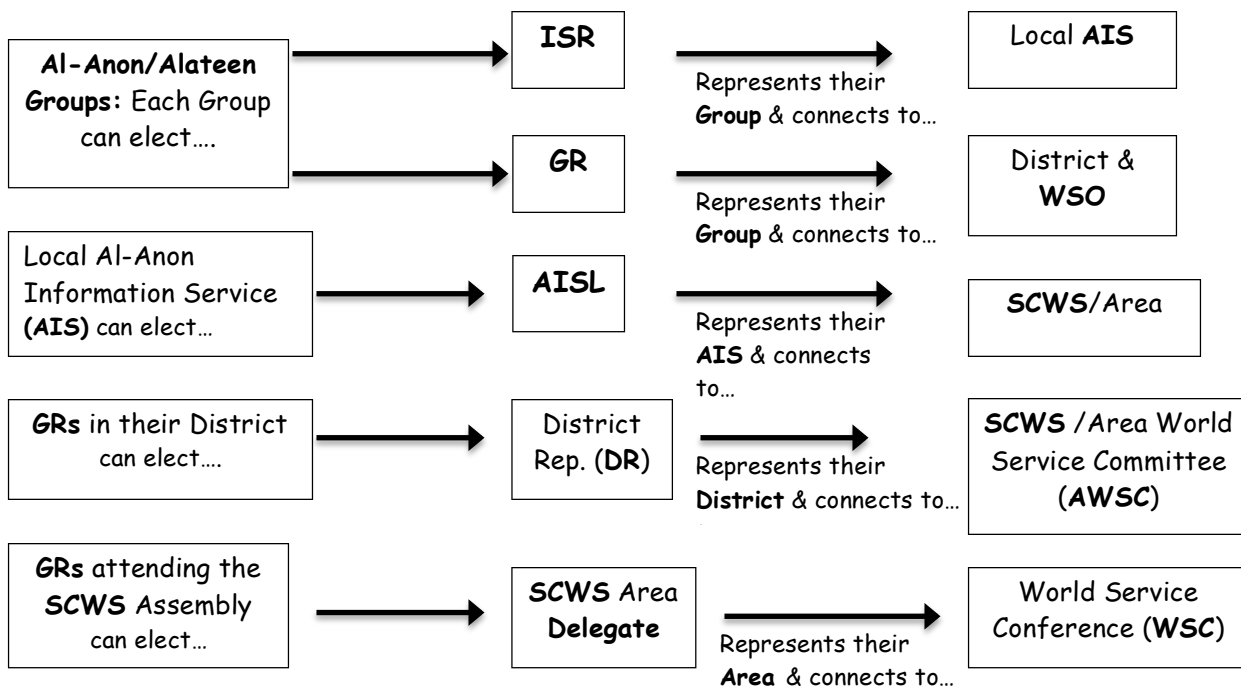
There are AI-Anon Information Service Centers (sometimes called *Intergroups*) in the Southern California World Service (**SCWS**) Area. (EX: Inland Empire, Los Angeles, San Diego, Orange County, Ventura.)

“An **AI-Anon Information Service (AIS)** is a local service established by one or more groups or districts located close enough to one another for easy access and communication. Any local AI-Anon or Alateen group may participate in an information service. An **AIS** exists to aid the groups it serves in the common purpose of carrying the AI-Anon message to the suffering families and friends of alcoholics. **An AIS may...** “Hold periodic meetings attended by **Information Service Representatives (ISRs)** from the groups it serves. **AIS** activity reports are made and discussions held on matters relating to the **AIS** and the groups. An **AIS** may also serve as a Literature Distribution Center (**LDC**). When the two entities are functioning at the same location, the **WSO** (World Service Office) will register them as an **AIS/LDC**” (AI-Anon Guidelines, G-4) The **AIS** and Districts within the **AIS** service area communicate/ coordinate with each other.

Each AI-Anon/Alateen group within the local **AIS** may elect an **Information Service Representative (ISR)** to attend the **AIS** meetings. The **ISR** connects their AI-Anon/Alateen meeting to the **AIS**.

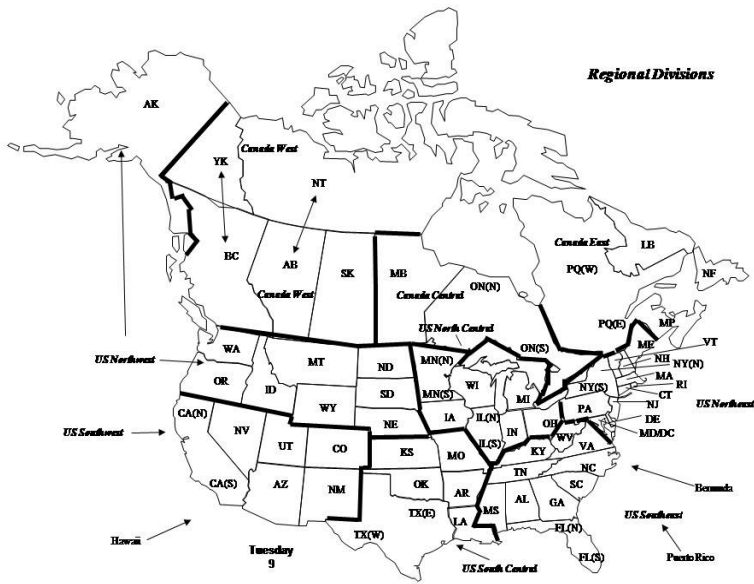
Each **AIS** can elect a representative, *AI-Anon Information Service Liaison (AISL)*, to attend the **SCWS** Area World Service Committee (**AWSC**) & Assembly meetings. The Liaison connects their **AIS** to the Area. “**AISs** send a representative, called an AI-Anon Information Service Liaison (**AISL**), to Area World Service Committee and Assembly meetings.” (AI-Anon/Alateen Service Manual, 2018-2021, p 67)

Each AI-Anon/Alateen group can also elect a **Group Representative (GR)**. A **GR** represents their group at their local District meetings & connects their group to World Service by attending & participating in the **SCWS** Assembly. (Please see Guidelines G-11)



(*NOT CAL; Created by Marcia M 2019)

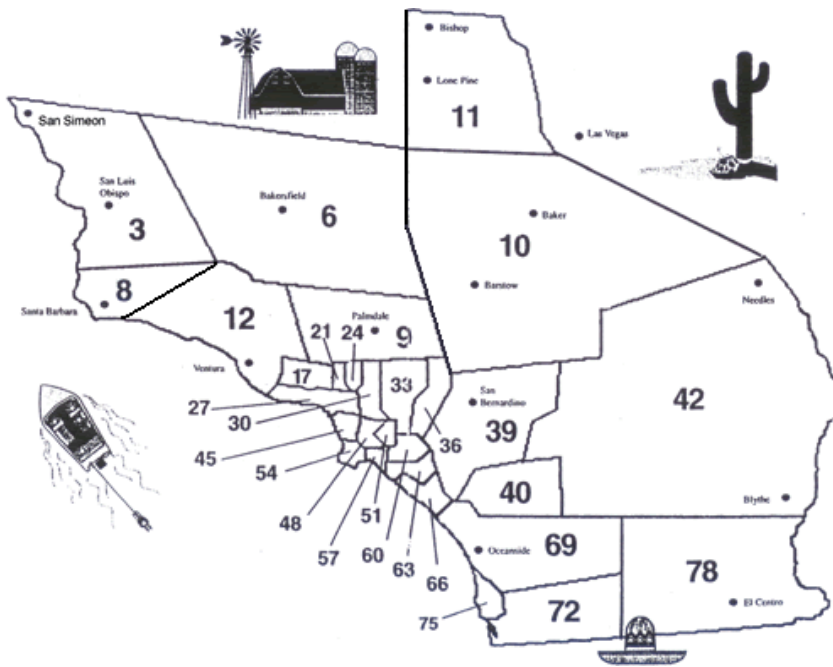
At the World Service Office (WSO) Level



WSO is the "hub" of the **Al-Anon Family Groups (AFG)** connecting all of us together. WSO is located in Virginia Beach, VA. The United States, Canada & Puerto Rico are divided into "**Areas**".

Every state is its own **Area**, with a few states divided into 2 Areas (ex: Calif. North; Calif. South).

California South



California South Area: Southern California World Service (SCWS). Each Area elects a **Delegate** to represent their Area to the **World Service Conference (WSC)**. Every Area is further divided into **Districts**.

***Note:** This map hasn't been updated in a while. SWCS website has the specific cities/Districts. ☺

PLEASE refer to the World Service Conference Structure chart in the Service Manual

(*NOT CAL; Created by Marcia M 2019)